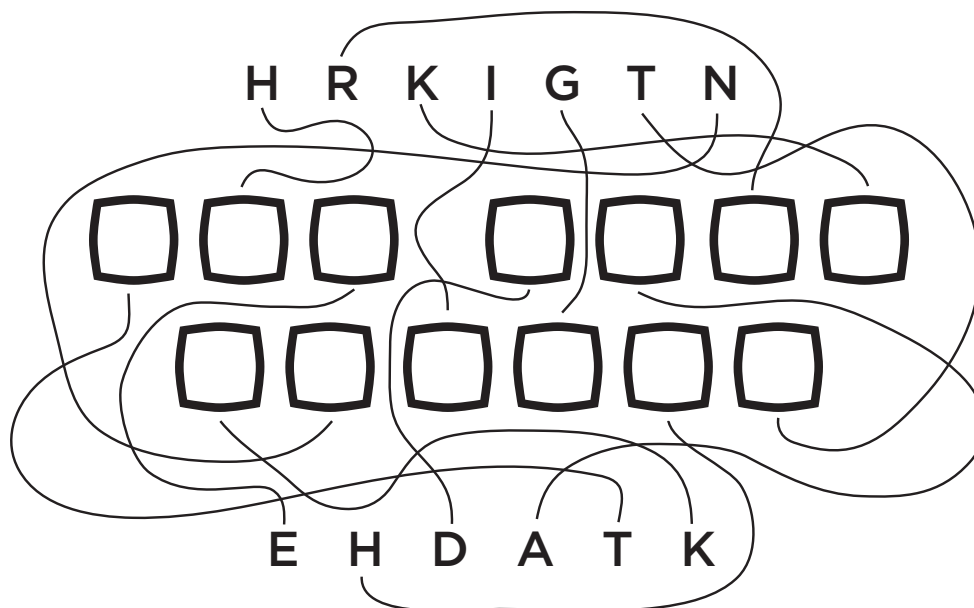


WHAT IS ONE OF BATMAN™'S NICKNAMES?

TO FIND OUT, FOLLOW THE LINES AND WRITE EACH LETTER IN THE CORRECT BOX.



TM & © DC Comics. (s21)



For more action-packed reading,
visit rhcbbooks.com!

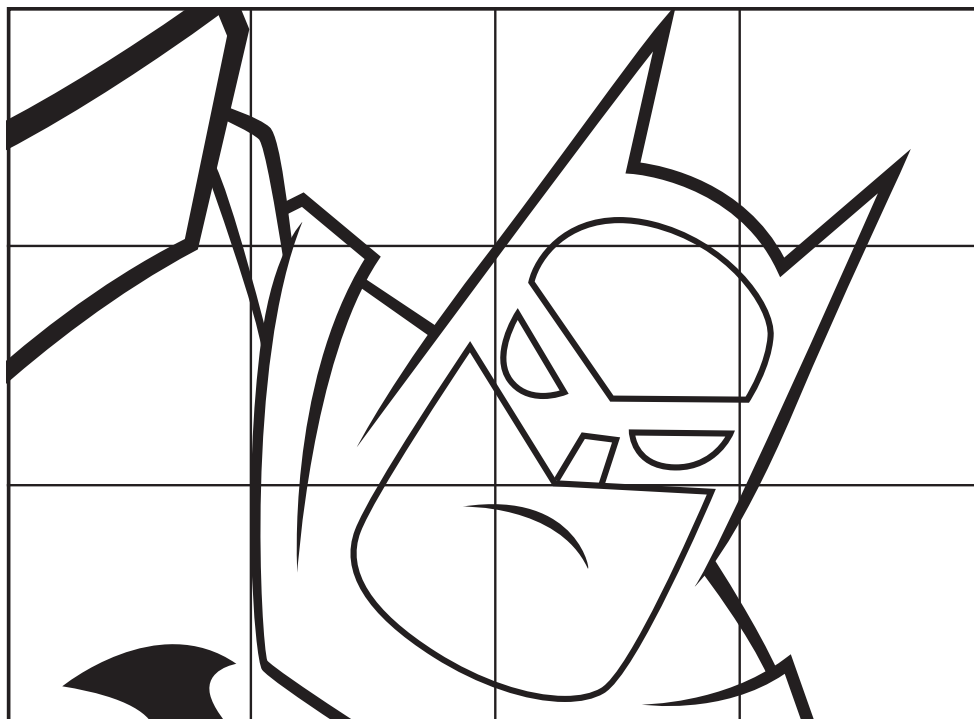
Available wherever books and ebooks are sold.

Answer: The Dark Knight.

 **RANDOM HOUSE**
CHILDREN'S BOOKS

DRAW BATMAN™!

USE THE GRID BELOW TO DRAW A PICTURE OF BATMAN.



TM & © DC Comics. (s21)



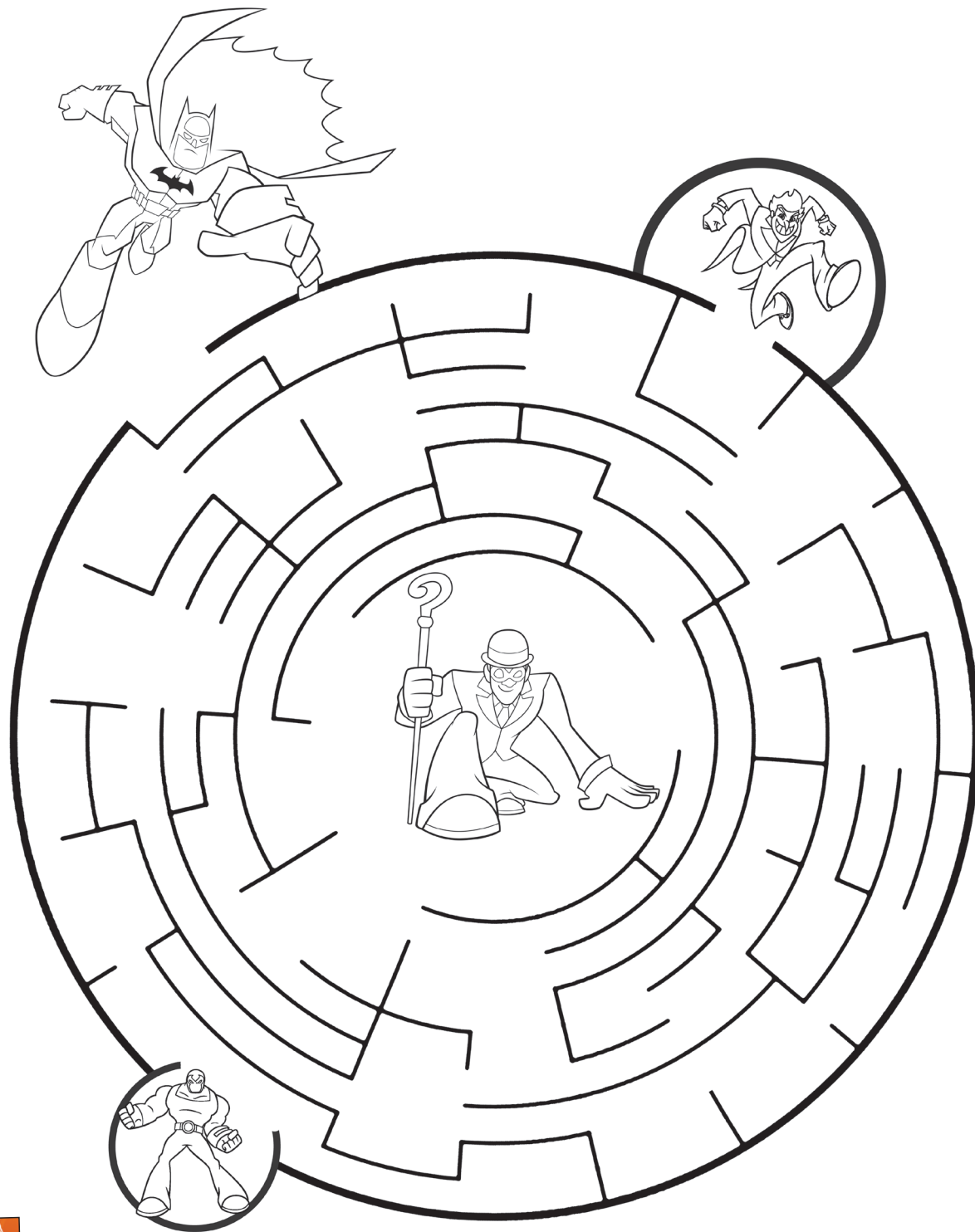
For more action-packed reading,
visit rhcbooks.com!

Available wherever books and ebooks are sold.

 **RANDOM HOUSE
CHILDREN'S BOOKS**

HELP BATMAN™!

SOLVE THE MAZE TO TRACK DOWN THE RIDDLER.
WATCH OUT FOR THE JOKER AND BANE!



TM & © DC Comics. (s21)



For more action-packed reading,
visit rhcbooks.com!

Available wherever books and ebooks are sold.

 **RANDOM HOUSE
CHILDREN'S BOOKS**



COLOR IN THE BATMAN™ IMAGE BELOW!



© DC Super Friends and all related characters and elements © & TM DC Comics. (621)



For more action-packed reading,
visit rhcbbooks.com!

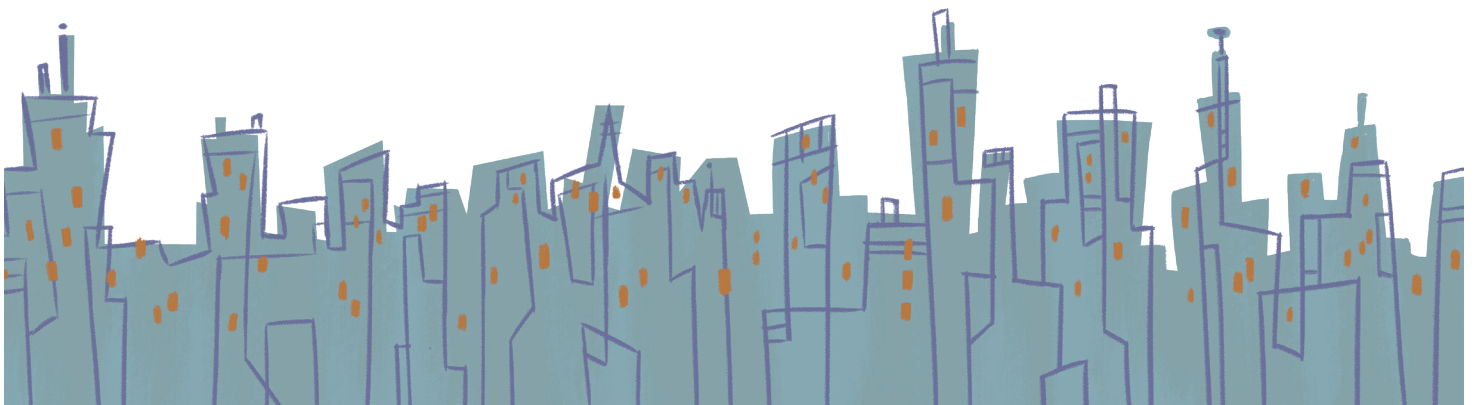
Available wherever books and ebooks are sold.






BE BRAVE LIKE BATMAN™

DRAW YOURSELF AS A SUPER HERO,
SWOOPING INTO TO SAVE GOTHAM CITY!



 BATMAN and all related characters and elements © & ™ DC Comics. (s21)



For more action-packed reading,
visit rhcbbooks.com!

Available wherever books and ebooks are sold.

 **RANDOM HOUSE
CHILDREN'S BOOKS**



WORD SCRAMBLE!

UNSCRAMBLE THE WORDS BELOW FROM
OUR DC ICONS SERIES!

1.) TAIHWLKRNEG

— — — — —

2.) AELUSSELROT

— — — — —

3.) MAHRAK

— — — — —

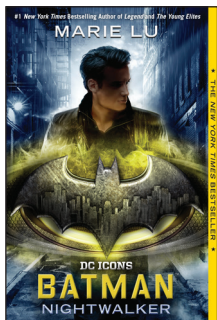
4.) HATGMO

— — — — —

5.) EFRADL

— — — — —

DC BATMAN and all related characters and elements © & ™ DC Comics. (s21)



Answer:

1.) Nightwalker 2.) Soulstealer 3.) Arkham 4.) Gotham 5.) Alfred

For more action-packed reading,
visit rhcbbooks.com!

Available wherever books and ebooks are sold.

DC ICONS

 **RANDOM HOUSE
CHILDREN'S BOOKS**



GOTHAM CITY WORD SEARCH!

FIND SOME OF GOTHAM CITY'S
WELL KNOWN PLACES AND CHARACTERS IN
THE WORD SEARCH BELOW!



ALFRED
ARKHAM ASYLUM

BATMAN
BRUCE

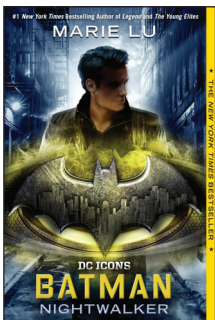
DARK KNIGHT
GOTHAM CITY

NIGHTWALKERS
SELINA

SOULSTEALER
WAYNETECH

X	D	A	R	K	H	A	M	A	S	Y	L	U	M	B
N	L	H	X	B	D	R	P	A	S	D	Z	Y	R	Z
I	K	T	D	K	S	J	L	X	Y	P	Q	U	W	L
G	T	K	P	E	D	F	N	J	M	O	C	H	U	Z
H	V	P	L	L	R	R	C	M	C	E	R	I	U	T
T	G	I	Z	E	H	C	E	T	E	N	Y	A	W	D
W	N	C	D	S	D	L	F	J	B	C	X	Z	K	N
A	D	A	R	K	K	N	I	G	H	T	U	H	B	O
L	Y	K	D	S	G	O	T	H	A	M	C	I	T	Y
K	H	E	S	B	P	S	B	O	I	I	Y	U	F	G
E	I	E	Z	A	Q	T	M	A	D	T	F	S	C	V
R	F	O	G	T	Y	D	Z	J	N	I	X	D	S	R
S	W	G	O	M	L	A	L	Q	J	V	R	O	P	G
Z	R	E	L	A	E	T	S	L	U	O	S	N	I	F
T	P	S	D	N	N	M	Q	S	N	H	A	V	K	A

TM & © DC Comics. (621)



**GREAT
TEEN GIFTS!**

Answer:



DC ICONS

For more action-packed reading,
visit rhcbbooks.com!

Available wherever books and ebooks are sold.



MY SUPER HERO SYMBOL

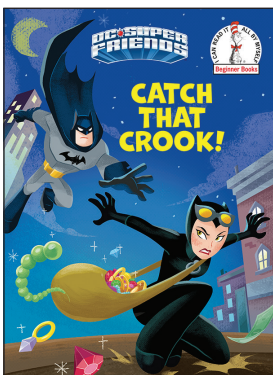
BATMAN™ AND BATGIRL™ EACH HAVE BAT-SYMBOLS!



TM

CREATE A SUPER HERO SYMBOL FOR YOURSELF HERE!

Large empty box for creating a super hero symbol.



For more action-packed reading,
visit rhcbbooks.com!

Available wherever books and ebooks are sold.