



MY ADVENTURES WITH
BATMAN!TM



BATMAN™ TO THE RESCUE!

The people of Gotham City™ call on Batman™ by lighting up the night sky with his bat-signal™. If you were a superhero, what would your signal look like? Draw it below!

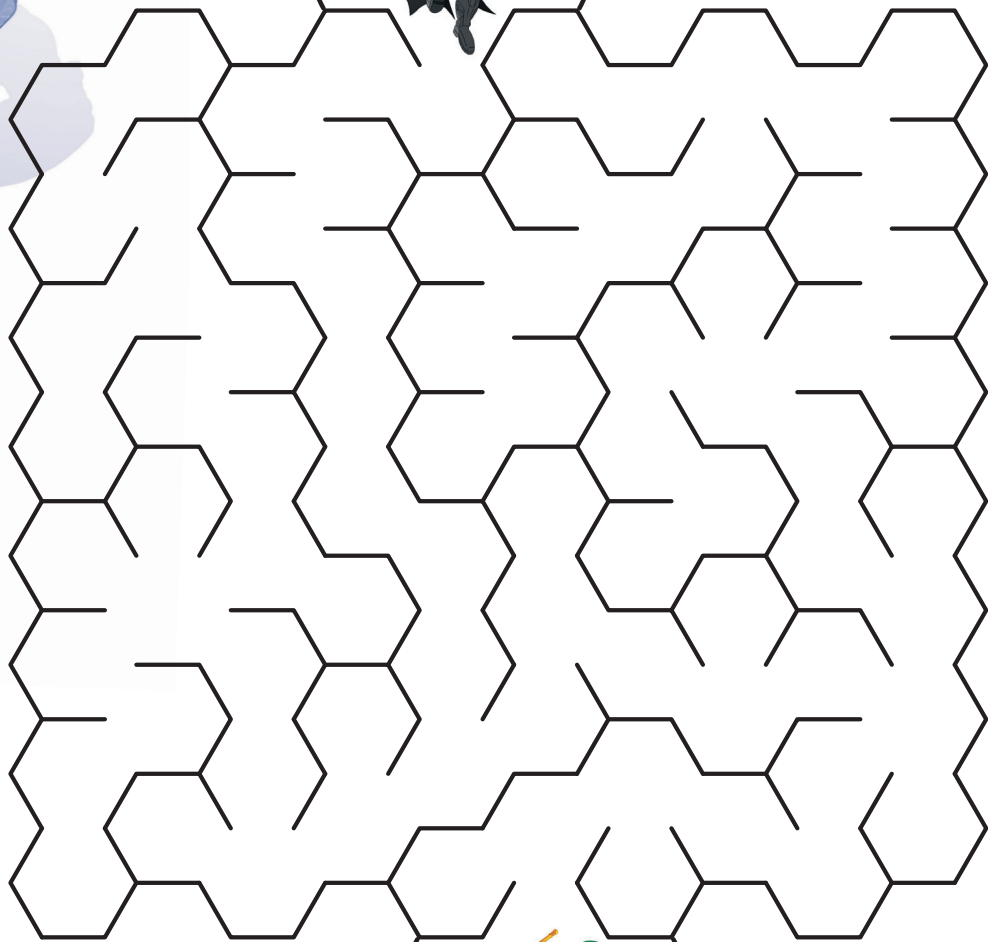


Copyright © 2022 DC Comics.
DC SUPER FRIENDS and all related characters and
elements are trademarks of and © DC. (s22)

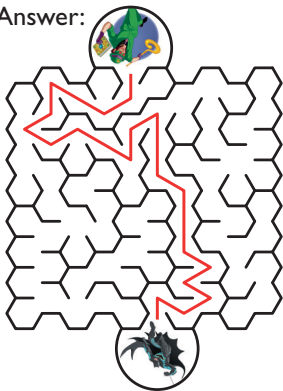


BATMAN'S BIGGEST FOES!

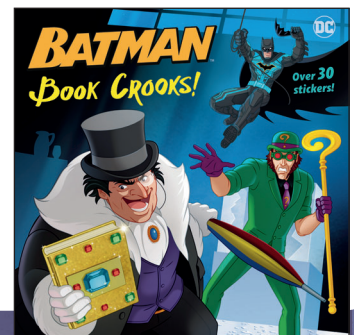
Oh no! The Penguin™ and The Riddler™ have teamed up to steal a valuable book of ancient riddles from the Gotham City™ Museum. Help Batman™ navigate through Gotham City to stop them and save the day!



Answer:

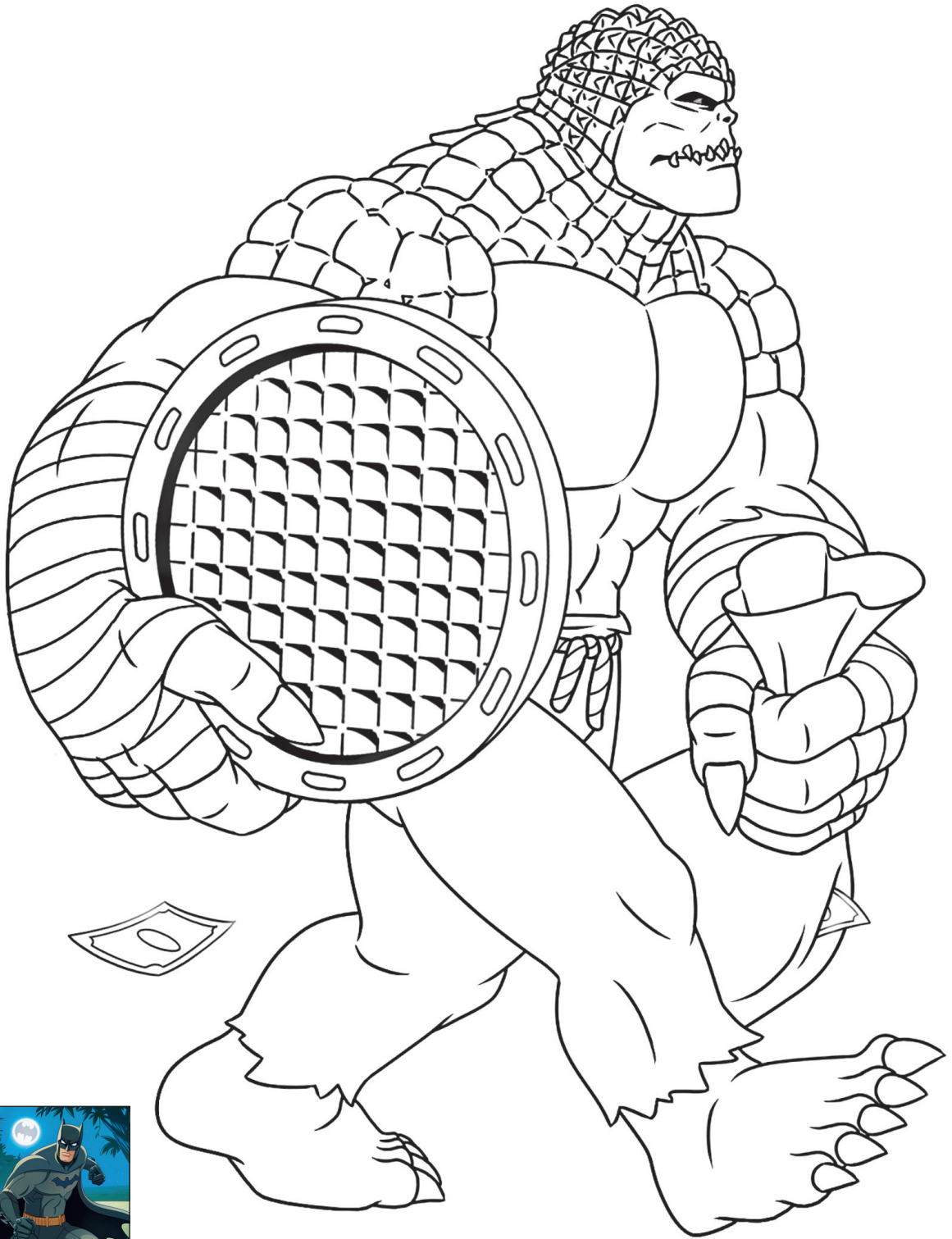


Copyright © 2022 DC Comics.
BATMAN and all related characters and elements
© & TM DC Comics. WB SHIELD: TM & © Warner Bros.
Entertainment Inc. (s22)



CAN BATMAN™ STOP CROC?

Color in the image below!



Copyright © 2022 DC Comics.
BATMAN and all related characters and elements
© & ™ DC Comics. WB SHIELD: ™ & © Warner Bros.
Entertainment Inc. (s22)

THE HIGH-FLYING BATBOT!

There are six pictures of the Batbot™ below! They all look the same, but one is slightly different. Can you spot it?



Answer: F



Copyright © 2022 DC Comics.
BATMAN and all related characters and elements
© & TM DC Comics. WB SHIELD: TM & © Warner Bros.
Entertainment Inc. (s22)



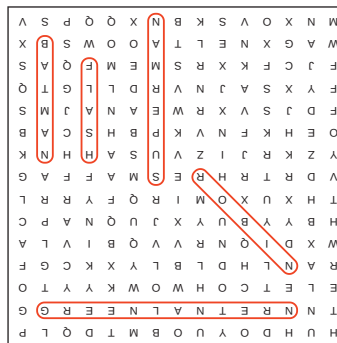
BATMAN™ AND ALL HIS FRIENDS!

Look up, down, backward, forward, and diagonally to find Batman™ and all his friends' names below!

BATMAN™
 SUPERMAN™
 ROBIN™
 FLASH™
 GREEN LANTERN™



Answer:



Copyright © 2022 DC Comics.
 DC SUPER FRIENDS and all related characters and
 elements are trademarks of and © DC Comics.
 WB SHIELD:™ & © Warner Bros. Entertainment Inc. (s22)

