

FINN

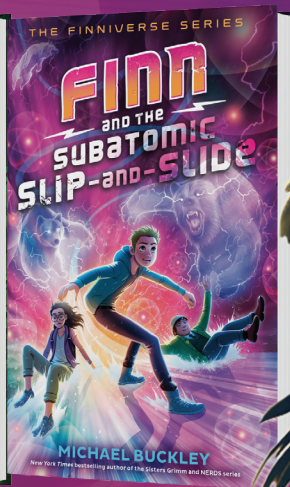
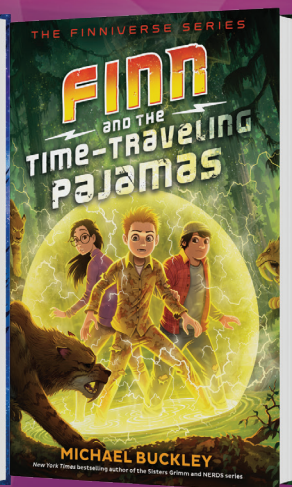
and the

SUBATOMIC SLIP-and-SLIDE

Activity Brochure

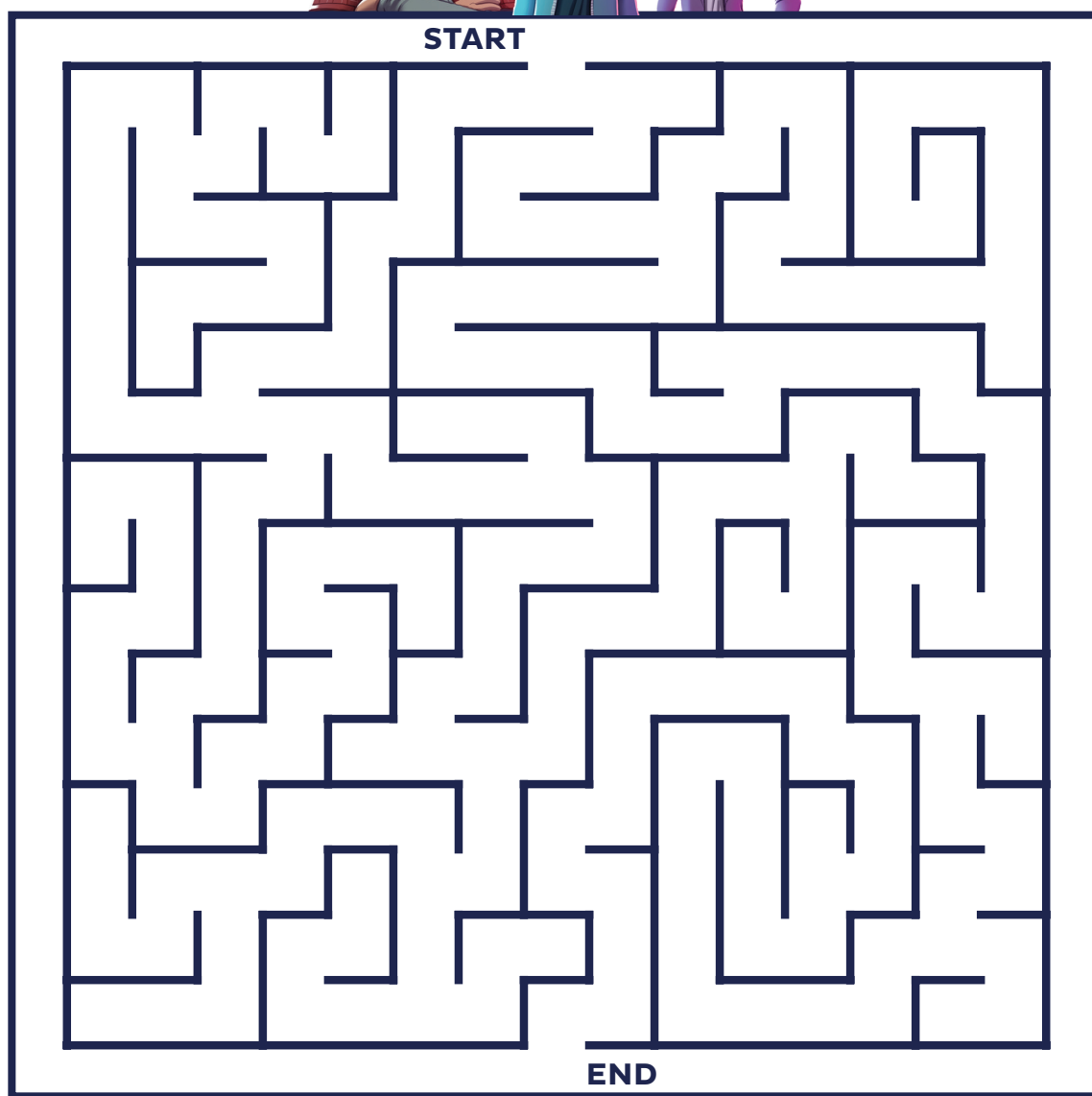
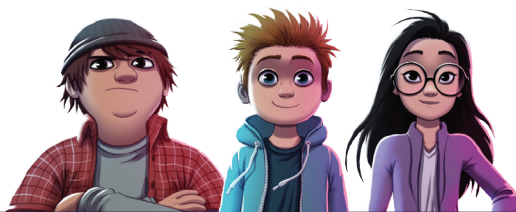
Continue the time-jumping, universe-skipping adventure with these activities.

- The Mother Ship Maze
- Number Block Puzzle
- Which Finniverse Character Are YOU?
- Answer Key

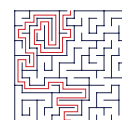


THE MOTHER SHIP maze

Between bugs and evil robots, getting onto the mother ship is no easy feat! Can you complete the mission in time? Help Finn and his friends navigate the maze and find Pre'at before it's too late.



ANSWER
KEY



NUMBER BLOCK PUZZLE

Reaching the subatomic is going to require some fancy tech (and a lot of problem-solving). Can you tackle Pre'at's puzzle?

THE RULES:

- Each missing number is an integer between 1 and 5.
- Numbers in each row add up to the totals on the right.
- Numbers in each column add up to the totals along the bottom.
- The diagonal line will add up to the total in the corner.

		1			13
5					15
				5	18
			3		12
			2		13

13	18	15	12	11	15	19
----	----	----	----	----	----	----

ANSWER KEY

5	2	5	5	2
2	5	2	5	2
5	5	5	5	5
1	1	5	5	5
5	2	1	1	5

WHICH FINNIVERSE CHARACTER ARE YOU?

Saving the world is about to get slippery. What role will you play in *Finn and the Subatomic Slip-and-Slide*? Find out by taking this one-of-a-kind character quiz. Answers are on page 5.

The Plague has returned, and life as you know it has completely changed! As evil bugs begin to infest Earth, what will you do?

- a. Start a rebellion! It might just be you and your sibling, but you must do something.
- b. Get ready to rearrange time—you've already made leaps across the universe. What's one more time?
- c. Stay home! The only way you'll save the world is if someone kidnaps you.

The bugs are getting closer, and it's now or never! How will you make your daring escape?

- a. You'll do whatever it takes! You're ready to slip and slide into any intergalactic gismo, even if it means becoming a subatomic particle.
- b. You're going to need something out of this world, and you know just who to call!
- c. You might need a slight push in the right direction. (Honestly, if it were up to you, you wouldn't be here in the first place!)

You've gone subatomic! Unexpected trouble still lies ahead, and the fate of the world is in your hands. What's your next move?

- a. Find a safe place to camp out! You might need to make a deal or two to get to your next destination, but you're excited for the adventure.
- b. Rely on some subatomic foes turned friends! You're going to need all the help you can get.
- c. You're not sure, but any plan that involves becoming life-size sounds good to you. You can't fulfill your academic dreams if no one can see you!

Want to find out what happens next? Continue the adventure with *Finn and the Subatomic Slip-and-Slide*.



WHICH FINNIVERSE CHARACTER ARE YOU?

Answer Key

If you chose mostly As . . .

You're the adventurous, time-jumping rebel Julep! You're never afraid to join an intergalactic adventure, especially when the fate of Earth—and the universe—is at stake! Whatever happens, you are always there to be the fearless friend.



If you chose mostly Bs . . .

You're the intergalactic lunchbox-wielding hero Finn! When saving the universe gets strange, you know how to be resourceful. You value your friends and always bring them along for the adventure (even if they come unwillingly).



If you chose mostly Cs . . .

You're the academic adventurer Lincoln! You weren't fully prepared to save the world this time around, but really, who is? Between your hidden talents and supreme intellect, you're an amazing addition to any team.