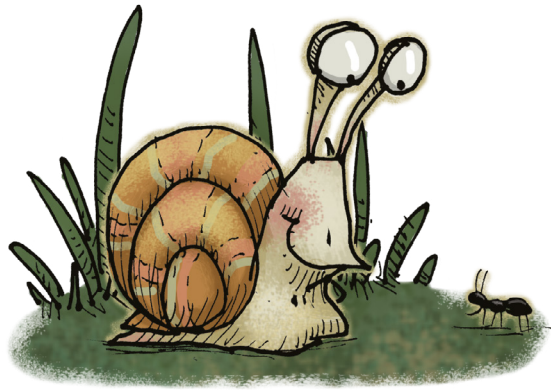
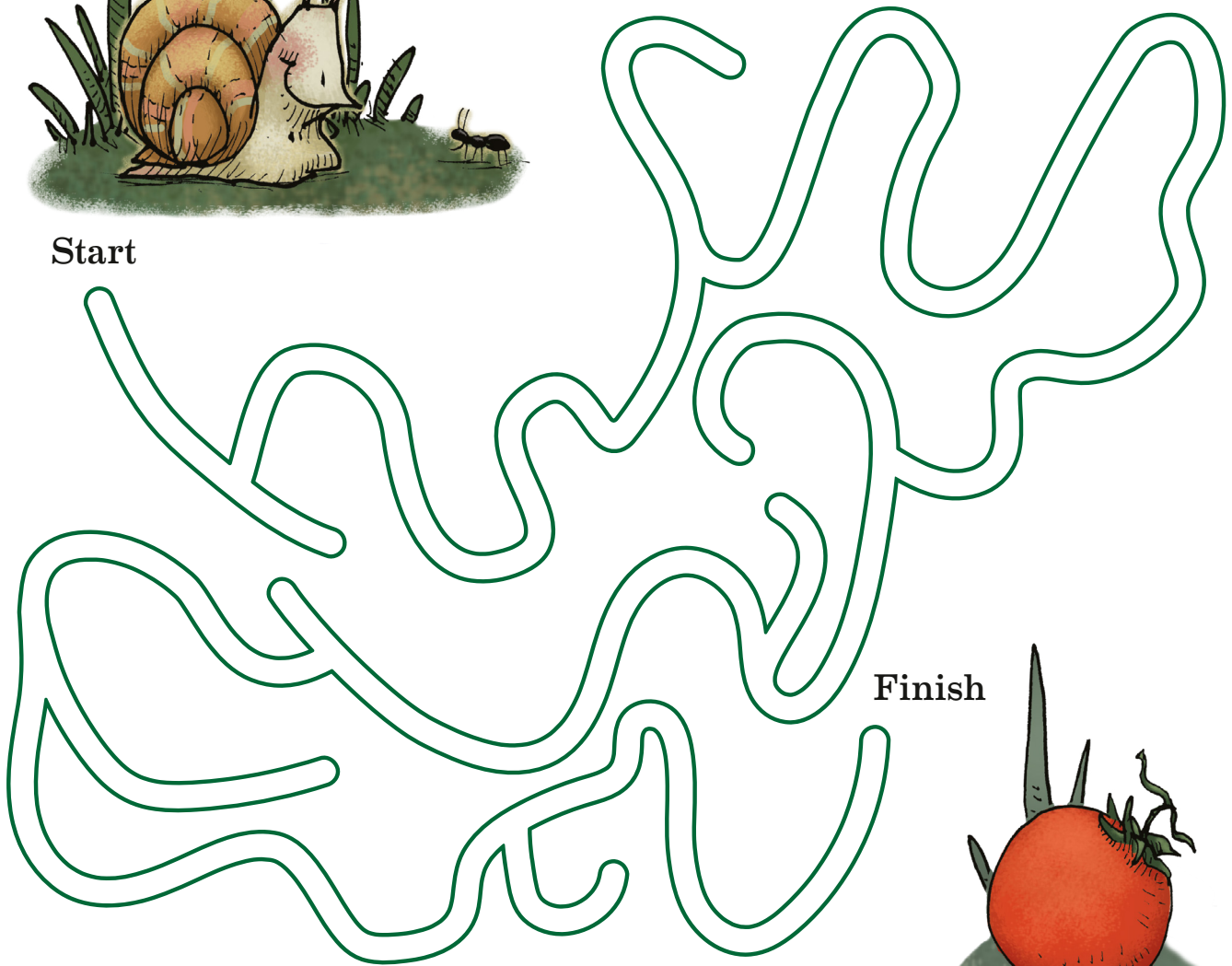


TOMATO TIME

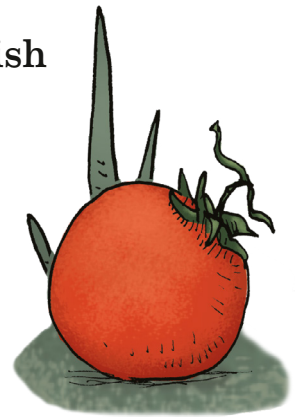
Help Bob get to his tomato!



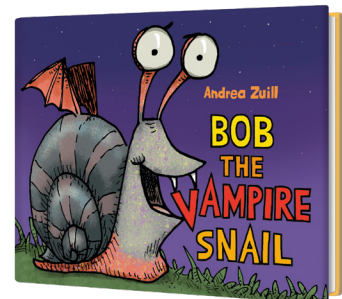
Start



Finish



Snails really do like tomatoes! If you're trying to grow them at home, use a tall tomato cage or a copper ring around the base to keep snails from eating your crop.

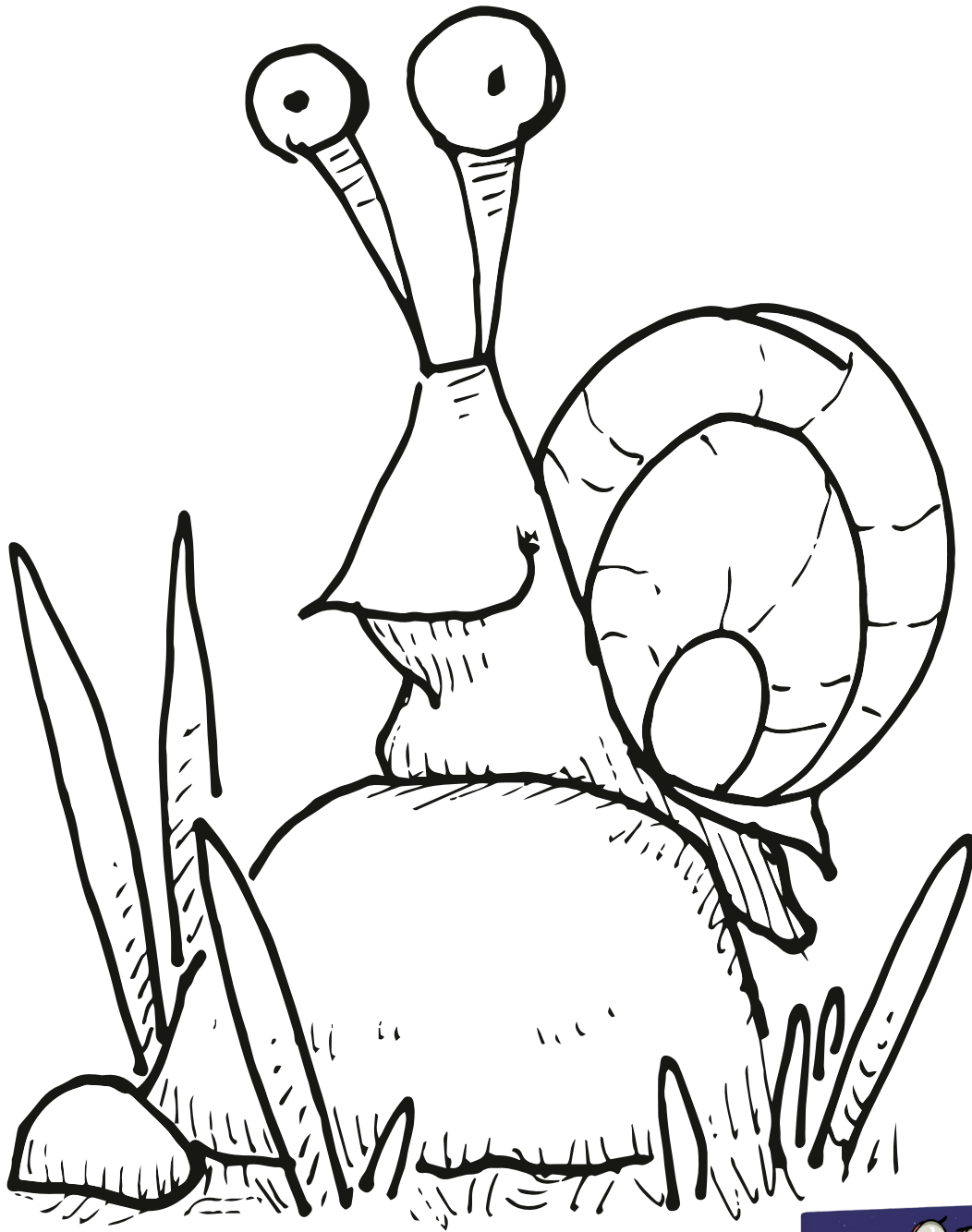


Copyright © 2025 by Andrea Zull

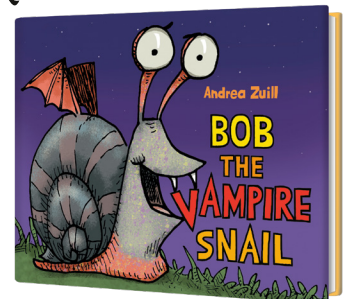
RANDOM HOUSE STUDIO NEW YORK

BUILD A BOB

Color the below!



Snail shells are striped because they grow their shells in layers, which is also how you can determine the age of a snail (just like a tree!).

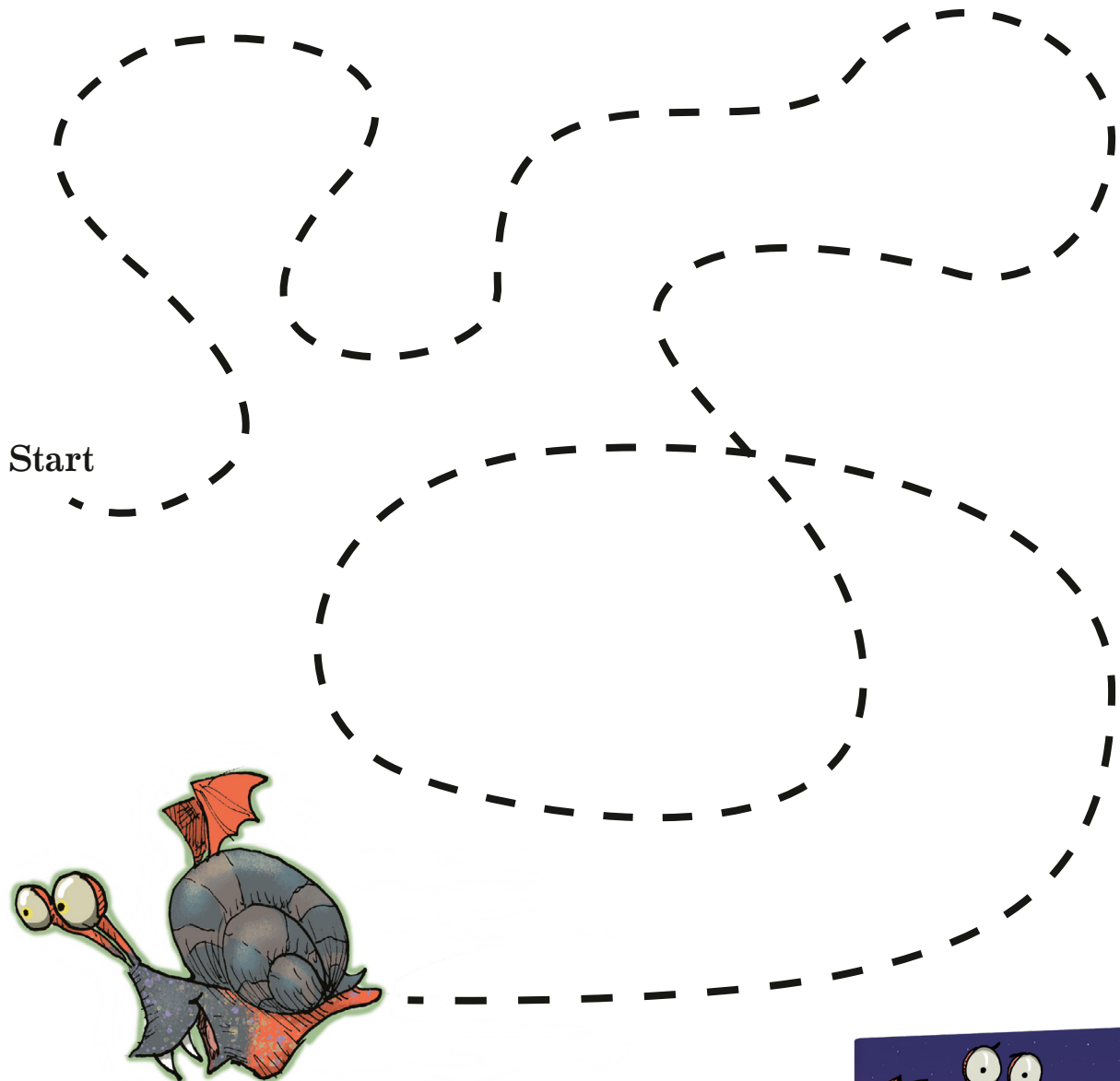


Copyright © 2025 by Andrea Zull

RANDOM HOUSE  STUDIO NEW YORK

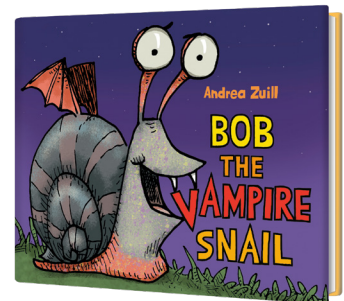
SNAIL TRAIL

Ever wondered what that sticky stuff is that snails leave behind? It's called snail slime, and it's a type of mucus (like what comes out of your nose when you're sick)! Create your own snail slime by following Bob's windy trail with a glue stick.



Always wash your hands
after touching snail slime
(or glue).

RANDOM HOUSE  NEW YORK



Copyright © 2025 by Andrea Zull