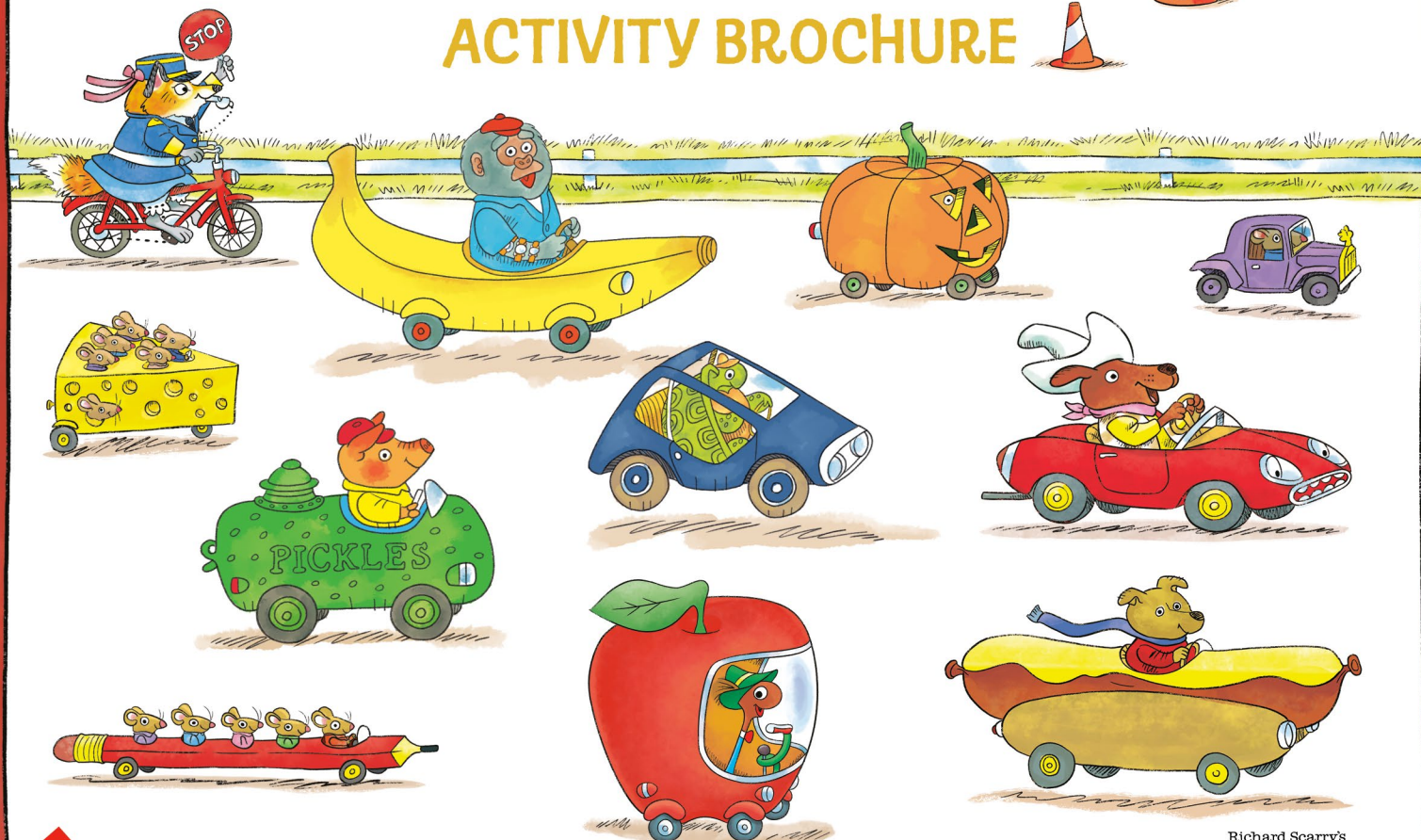


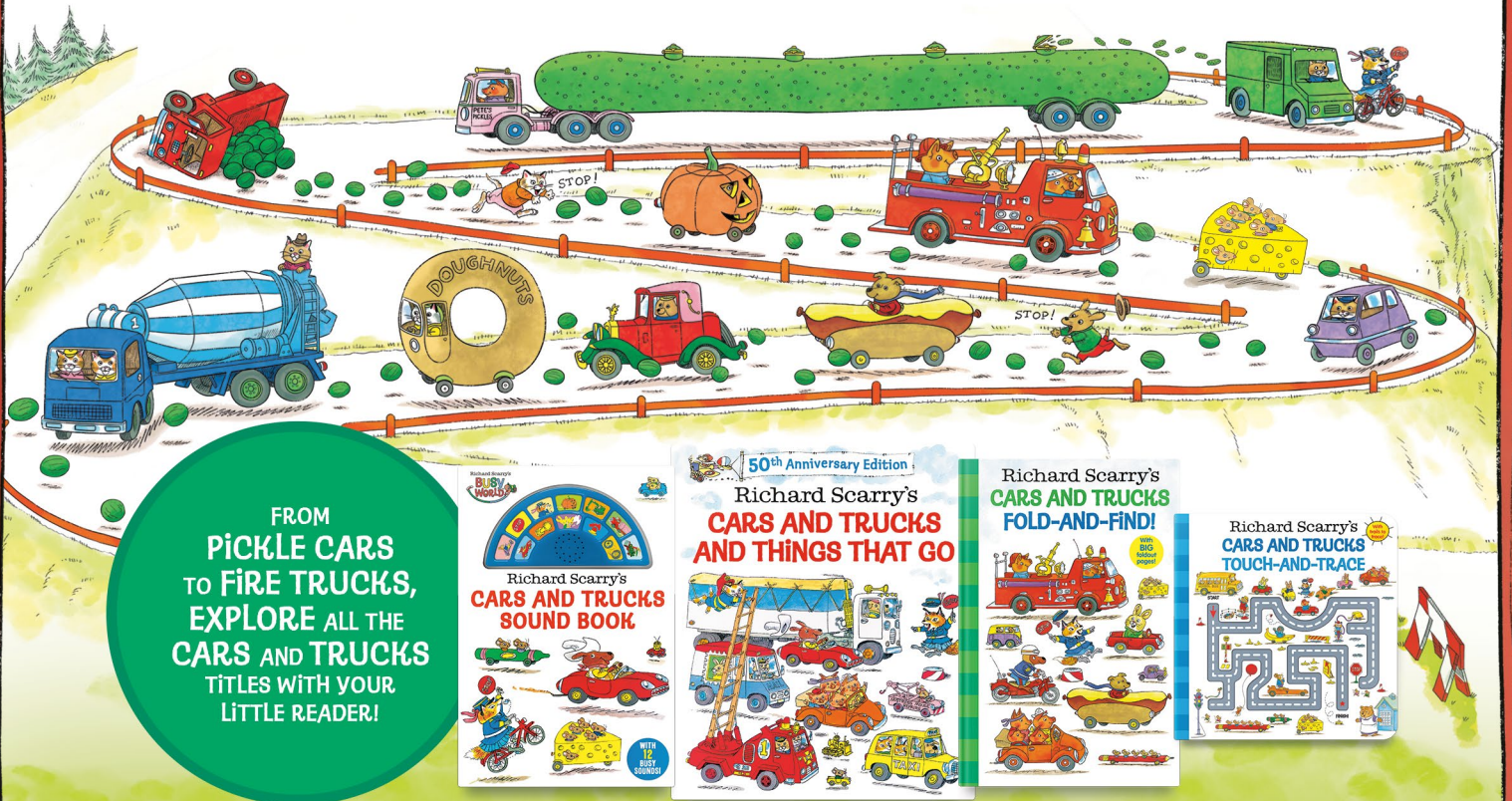
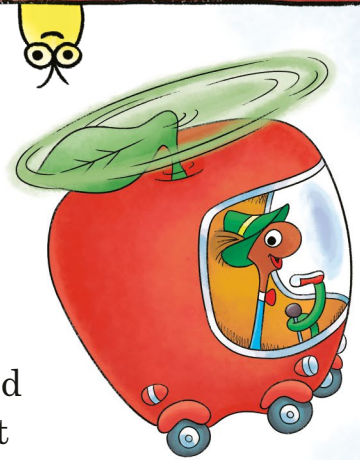
Richard Scarry's
**CARS AND TRUCKS
 AND THINGS THAT GO**
 ACTIVITY BROCHURE



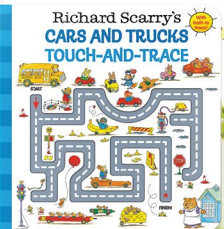
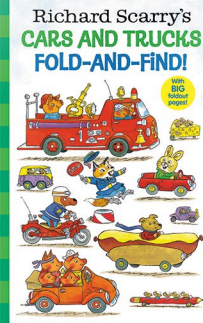
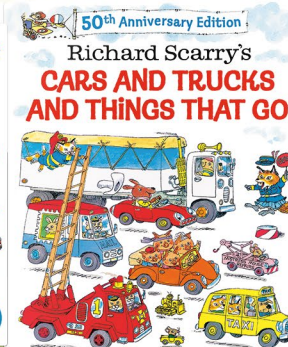
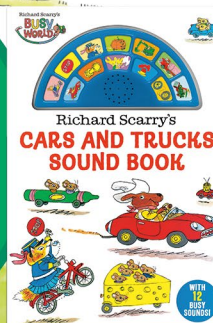
Dear Parents and Caregivers,

Cars and Trucks and Things That Go celebrated its fiftieth anniversary in 2024, but that doesn't mean the fun has to stop! This summer, we're continuing the celebration. From pickle cars to fire trucks, there are still so many silly vehicles (and books) to explore! Richard Scarry's humor and unique characters teach kids that reading and learning are fun! Use the materials provided to create a memorable moment for your little ones!

Your friends,

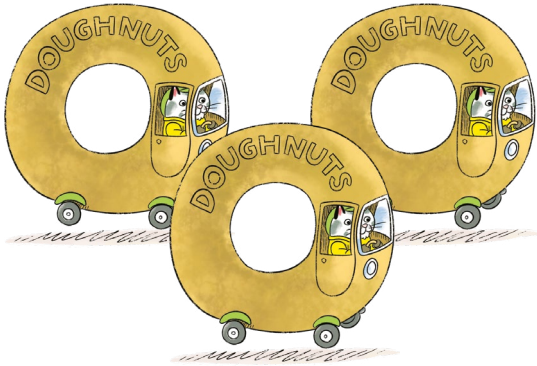


FROM
PICKLE CARS
TO FIRE TRUCKS,
EXPLORE ALL THE
CARS AND TRUCKS
TITLES WITH YOUR
LITTLE READER!



COUNT THE CARS AND TRUCKS!

Count the silly vehicles, then write down your answer!



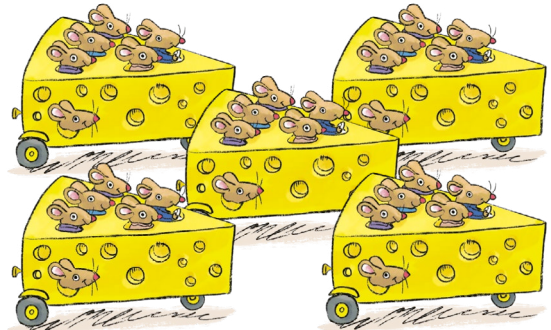
A



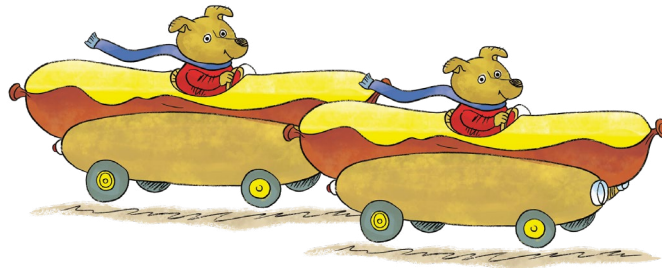
B



C



D



E

Answer Key:

A. 3, B. 1, C. 4, D. 5, E. 2

TRACE THE TRUCK!

Start at number 1 and connect the dots until the picture is complete!
Then color in the truck to finish the scene.





THINGS THAT GO WORD SEARCH!

Find the words in the word search below!

HONK

TRUCKS

BOATS

CARS

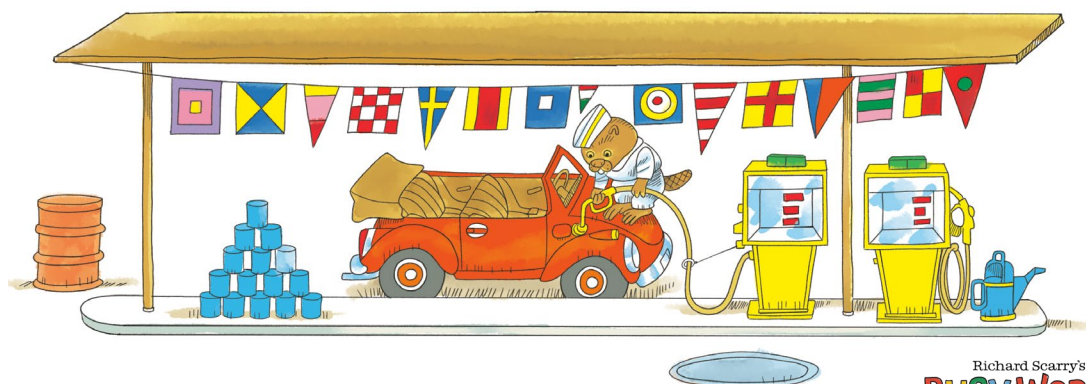
PLANES

TRAINS

B X X F N R V Z H Z
G L C O V F A J Q B
S G O D Q Z Y K E X
W K B T R A i N S W
H B E S J O B N D i
O O S B T R U C K S
N A R T B E A P V T
K T C A R S Z Q R G
Y S P L A N E S i C
Y B R S H B P L H R



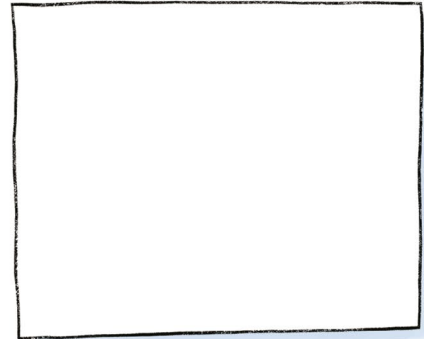
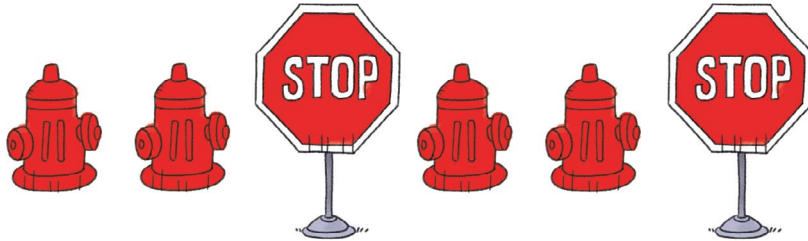
R H T L B H S X A
O I G E N V T A
D W O Z Z G E V A
L A V A R T A W
S K C R S W O
I N B O I S S
M S N I A R M
X H A Z Z O O S
B O I A A O T O
Z H Z A R N X X B



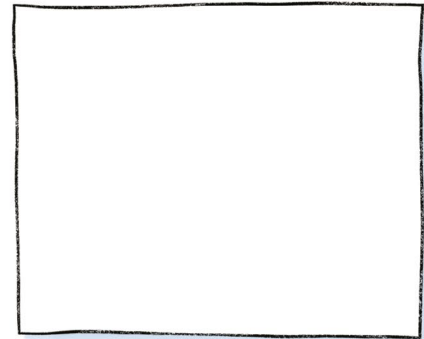
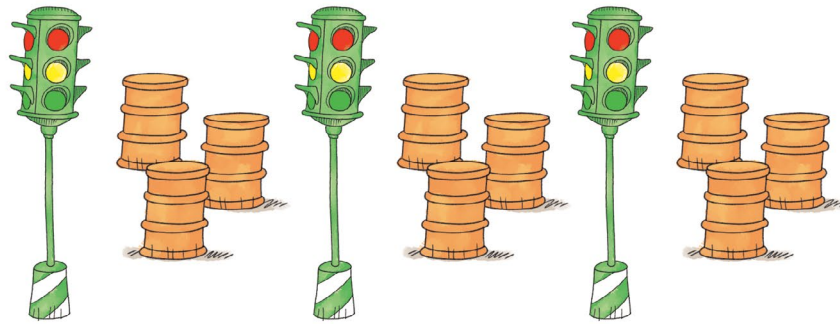
CARS AND TRUCKS PATTERNS!

Examine each row of pictures.
Can you guess which image should come next?

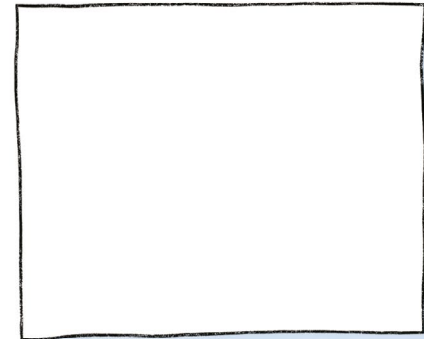
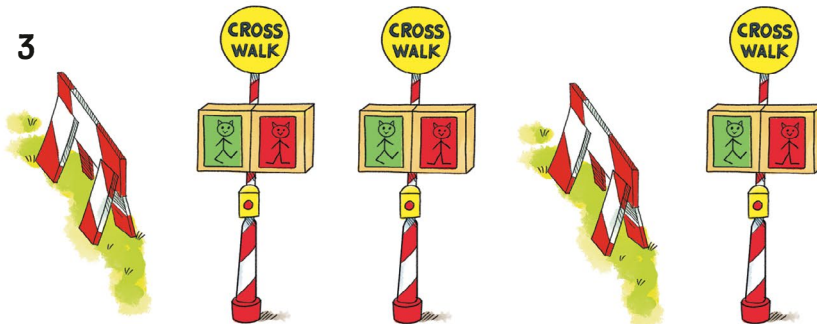
1



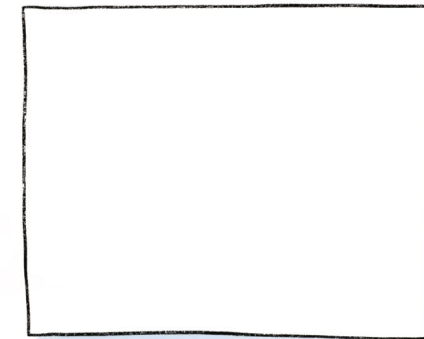
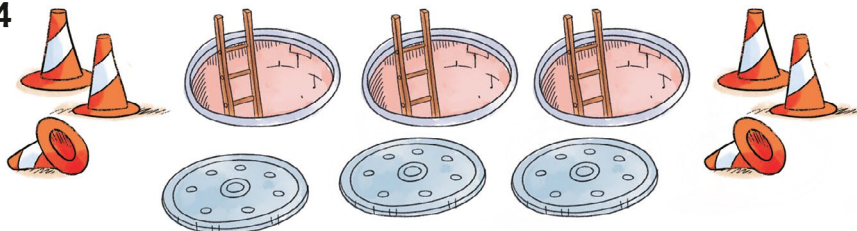
2



3



4



Answer Key:



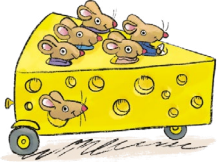
[illegible]

A maze puzzle with a red path and a green path. The red path starts at a red dot at the top left and ends at a green dot at the bottom right. The green path starts at a green dot at the bottom right and ends at a red dot at the top left. The paths are made of solid lines, while the walls are dashed lines.

CARS AND TRUCKS MATCHING GAME

Match the cars to their correct names!

1



A

PICKLE CAR

5



B

BANANA CAR

2



C

PENCIL CAR

6



D

HOT DOG CAR

3



E

PUMPKIN CAR

7



F

CHEESE CAR

4



G

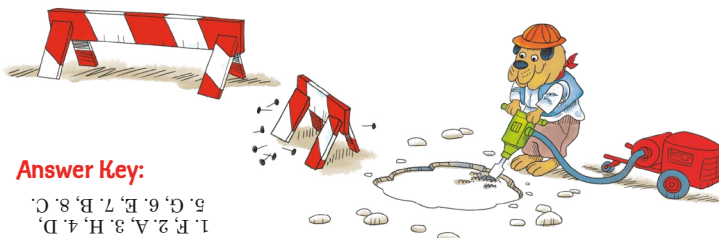
APPLECAR

8



H

EGG CAR



Answer Key:

1. F, 2. A, 3. H, 4. D,
5. G, 6. E, 7. B, 8. C.