

Magic Tree House



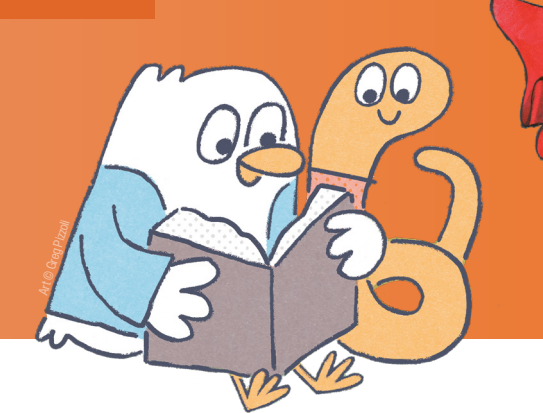
Withycakes



Unicorn Academy



Earl & Worm



A to Z Animal Mysteries



Junie B. Jones

# MADE ME A READER

## Activity Brochure



Bibsy Cross



The Boxcar Children

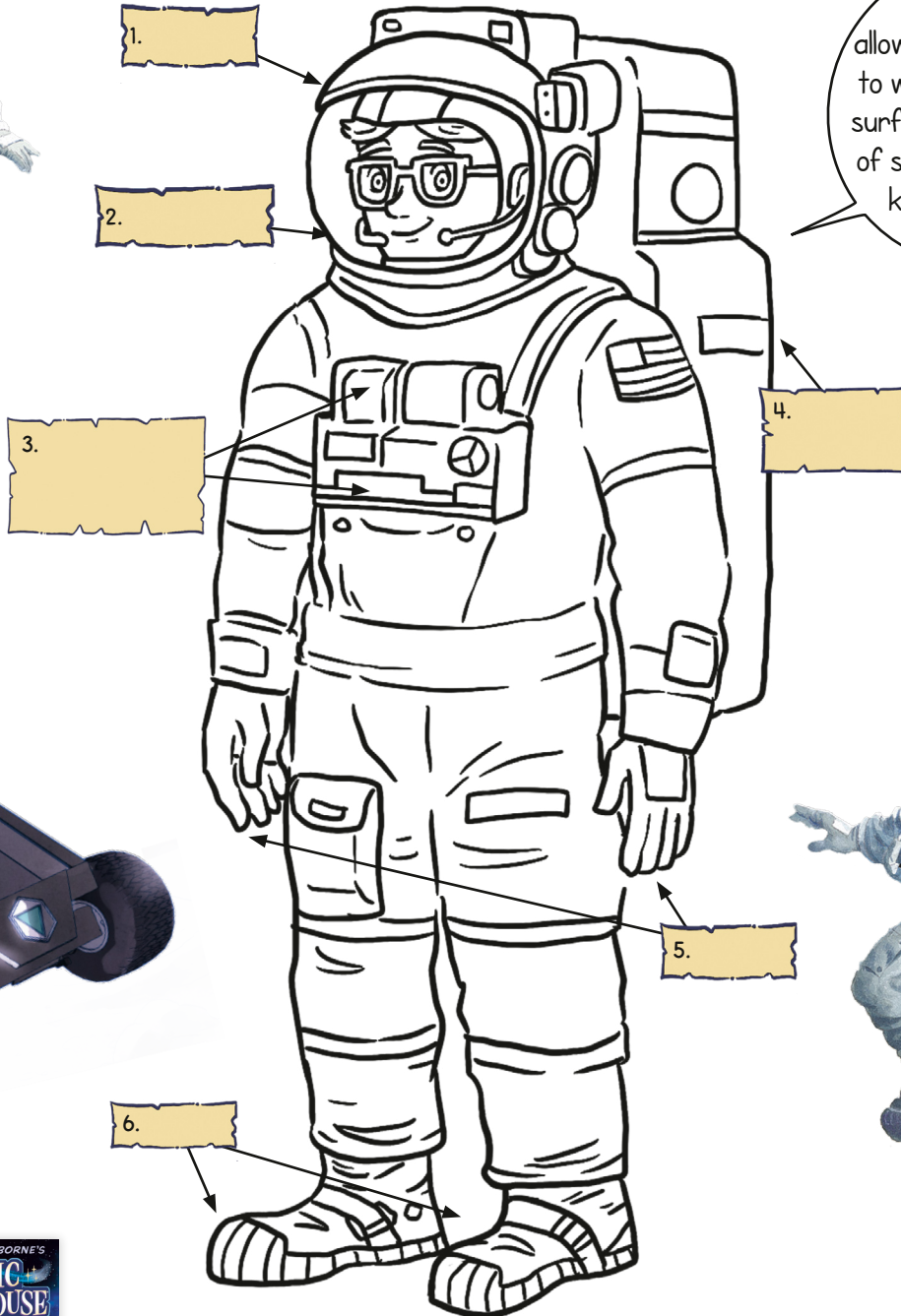


Llama Quest

# MADE ME A READER

## Space Suit Up

Astronauts must wear gear to protect themselves from the extreme elements of outer space! Can you label the important gear and color in your very own space suit?



Moon suits allowed the astronauts to walk on the moon's surface. They had lots of special features to keep astronauts safe.



### Answer Key:

- 1. Helmet, 2. Microphone,
- 3. Temperature and oxygen controls,
- 4. Oxygen supply,
- 5. Cloves, 6. Boots

© 2025 Mary Pope Osborne. Magic Tree House is a registered trademark of Mary Pope Osborne used under license. Illustrations © 2017 by Sal Murdocca. Magic Tree House Graphic Novel. Illustration © 2025 by Kelly Matthews and Nichole Matthews.

# MADE ME A READER

## First Day Jitters

The first day of school can be scary, only guess what? With the help of expert Junie B. Jones it'll be easy-peasy and regular-pegarular! Fill in the questions below to get ready for a day of fantastic firsts!

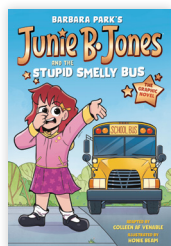
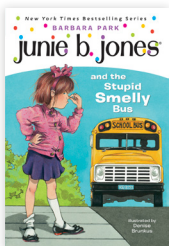
**1. Junie B. does NOT like the stupid smelly bus, but she is excited to wear her new "pat and leather" shoes. Do you have a special something to bring good luck on your first day?** \_\_\_\_\_

**2. What is something that you thought you didn't like at school, but once you tried it, you loved?** \_\_\_\_\_



**3. Can you think of something that excites you about school?** \_\_\_\_\_

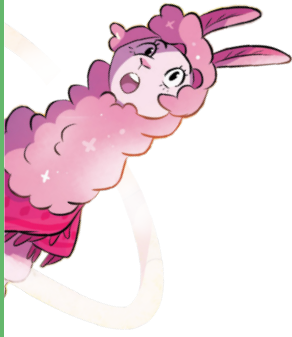
**4. What do you want to accomplish at school this year?** \_\_\_\_\_



# MADE ME A READER

## "Who Am I?" Character Game

Choose one character from a chapter book series you love. Do not write their name down, just keep it in your head. Read each question and answer Yes or No for each.



**Is this character a kid?**  Yes  No

**Does this character spend lots of time with family?**  Yes  No

**Does this character like adventure?**  
 Yes  No

**Is this character brave?**  Yes  No

**Does this character listen to adults?**  
 Yes  No

**Does this character feel BIG feelings?**  
 Yes  No

**Does this character learn something new in every story?**  Yes  No

**Who is your character?** \_\_\_\_\_

\_\_\_\_\_

**Which three questions fit your character best?** \_\_\_\_\_

\_\_\_\_\_

\_\_\_\_\_

Draw your character!



On Sale  
8.25!

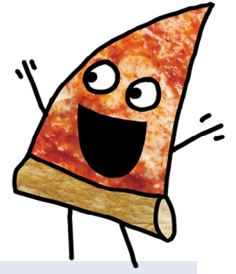




# MADE ME A READER

## Big Feelings

Choose two feelings words from the box below. Then describe a time in a story when a character feels those feelings. What do you think they looked like in the moment? Draw it.



**Afraid**  
**Angry**  
**Bored**

**Calm**  
**Curious**  
**Disappointed**

**Embarrassed**  
**Excited**  
**Grateful**

**Happy**  
**Hopeful**  
**Jealous**

**Nervous**  
**Overwhelmed**  
**Sad**

\_\_\_\_\_ **felt**

\_\_\_\_\_ **when**

\_\_\_\_\_ **felt**

\_\_\_\_\_ **when**

